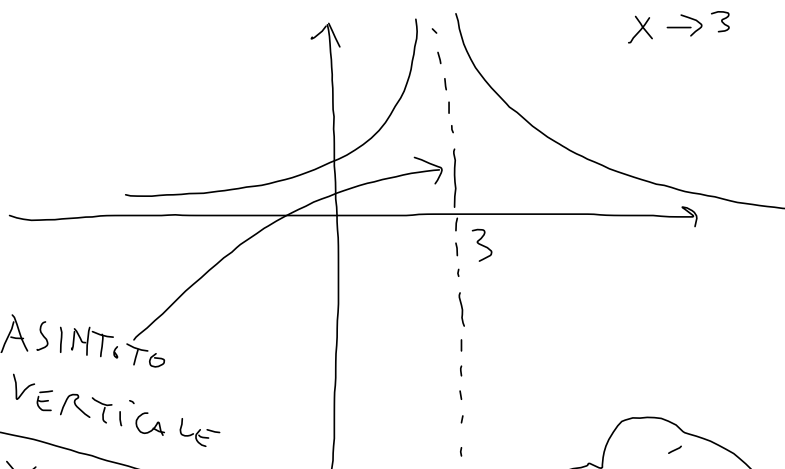


ASINTOTI

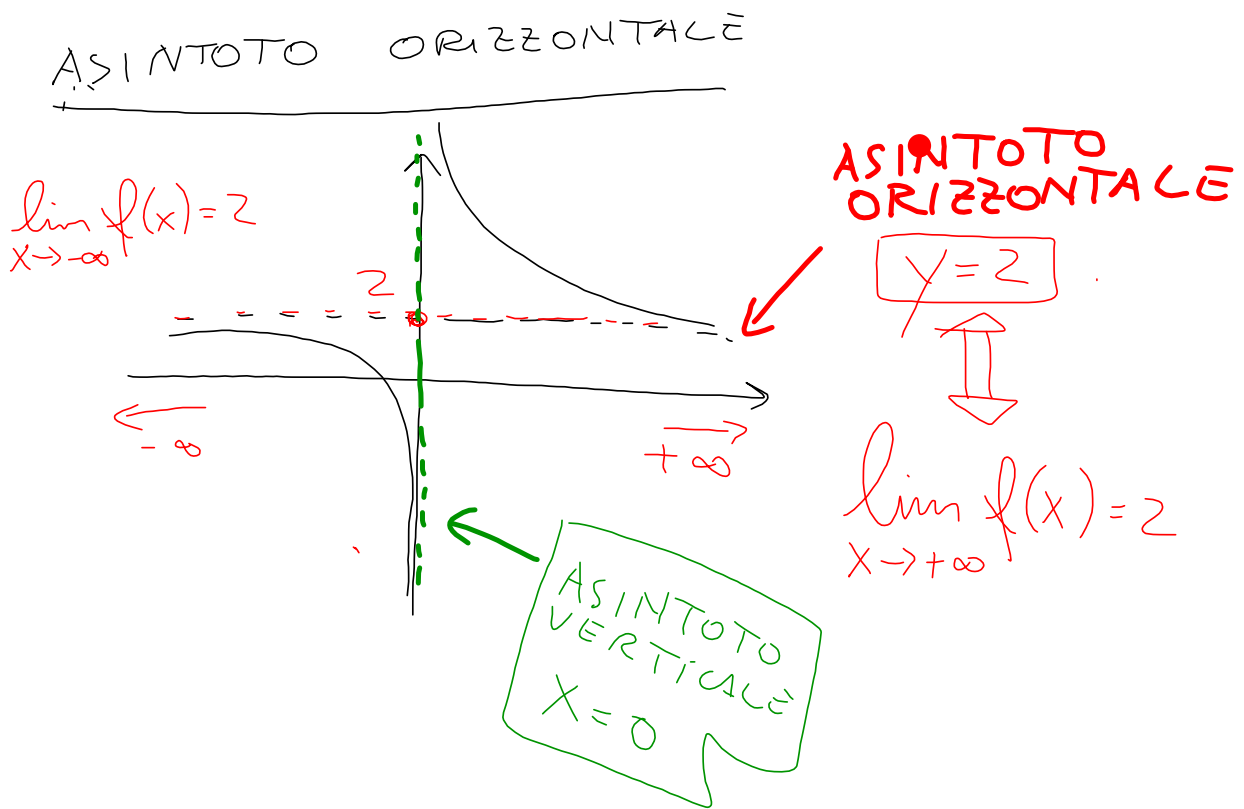
$$\lim_{x \rightarrow 3} f(x) = +\infty$$

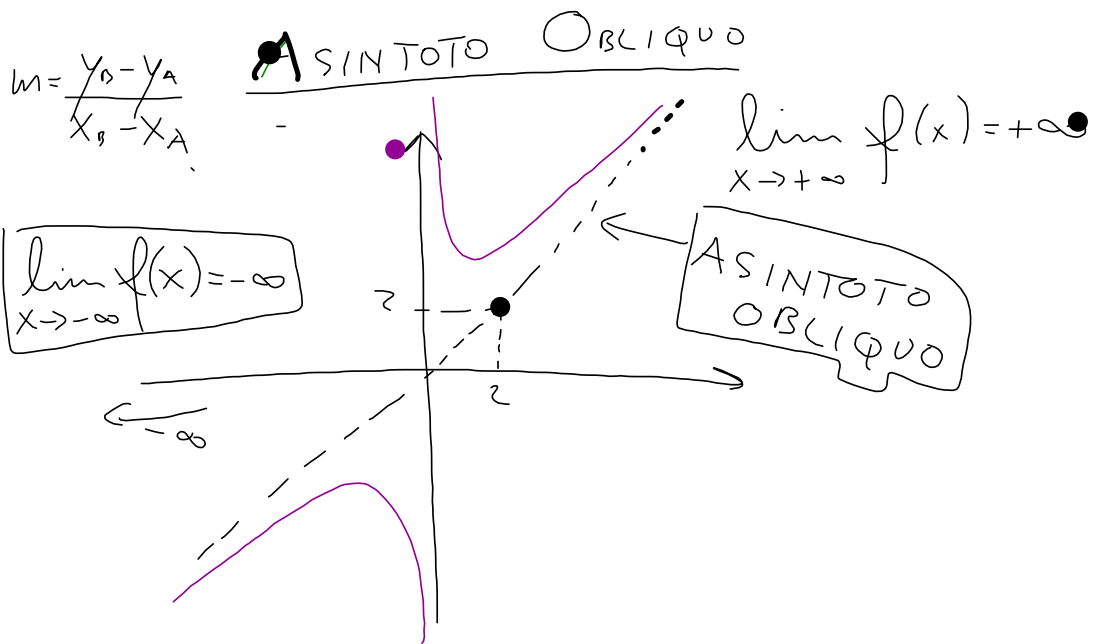


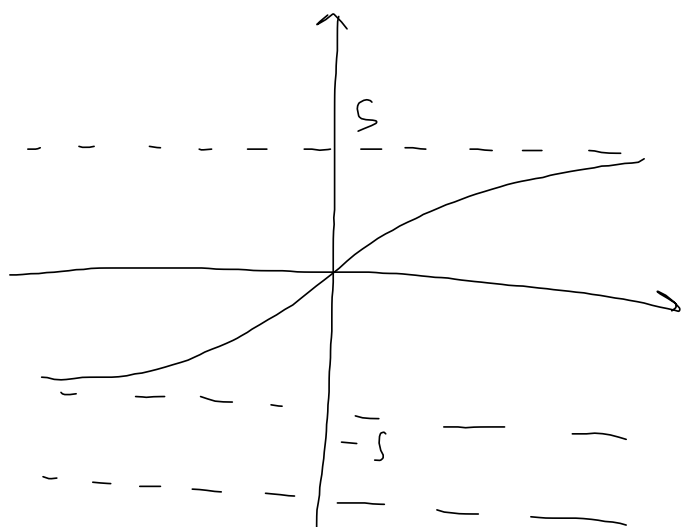
ASINTOTO
VERTICALE

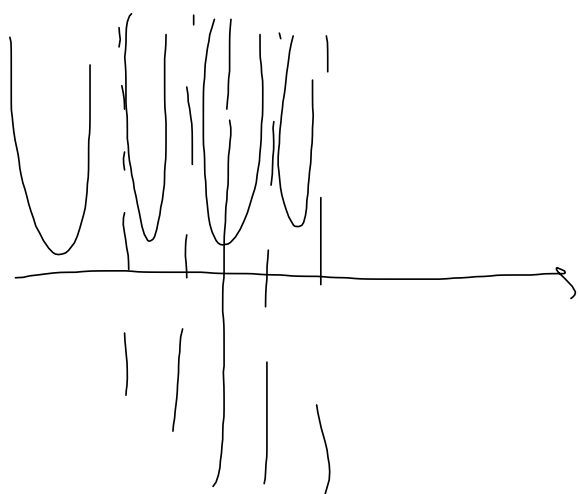
$$x = 3$$





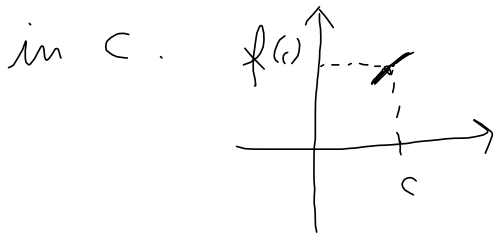




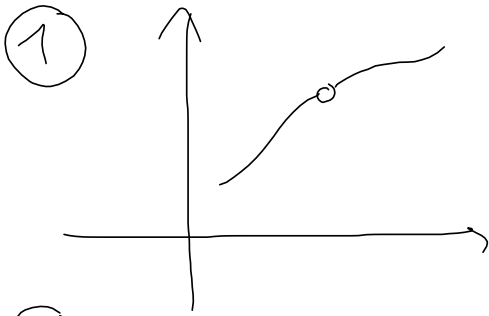


FUNZIONE CONTINUA

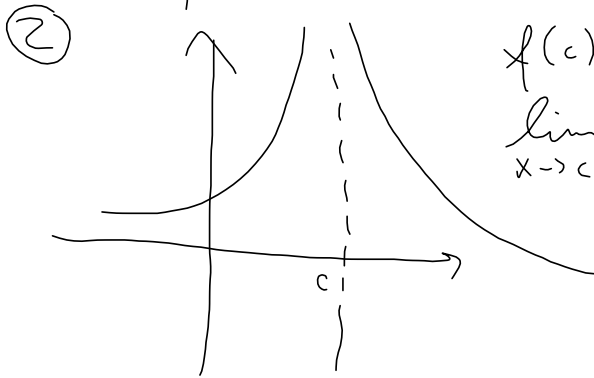
Se $f(x)$ è definita in c e $f(c)$ è uguale al limite di $f(x)$ per x che tende a $c \implies$ allora $f(x)$ è continua



PROPOSTE PER NON CONTINUITA'

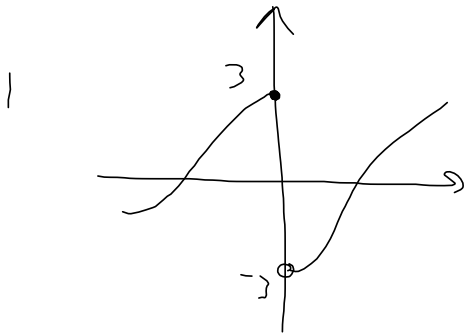


$f(c)$ NON ESISTE



$f(c)$ NON ESISTE

$$\lim_{x \rightarrow c} f(x) = \pm \infty$$



$$\lim_{x \rightarrow c^+} f(x) \neq \lim_{x \rightarrow c^-} f(x)$$