

## FUNZIONE CRESCENTE

$y = f(x)$  è CRESCENTE IN  
UN INTERVALLO  $E$  SE:

$$\forall x_1, x_2 \in E$$

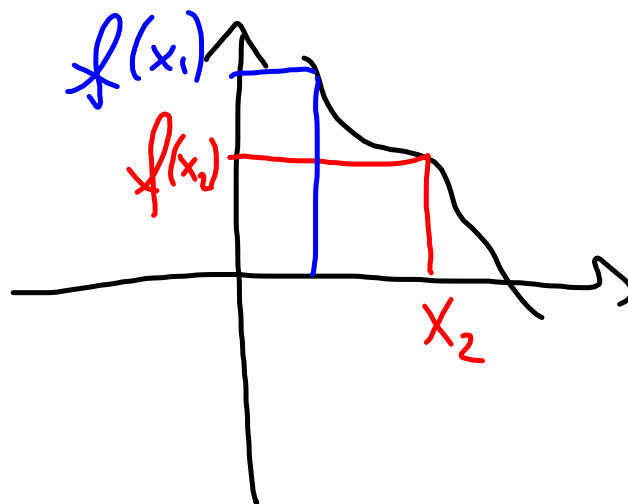
$$\text{se } x_1 < x_2 \implies f(x_1) < f(x_2)$$

# FUNZIONE DECRESCENTE

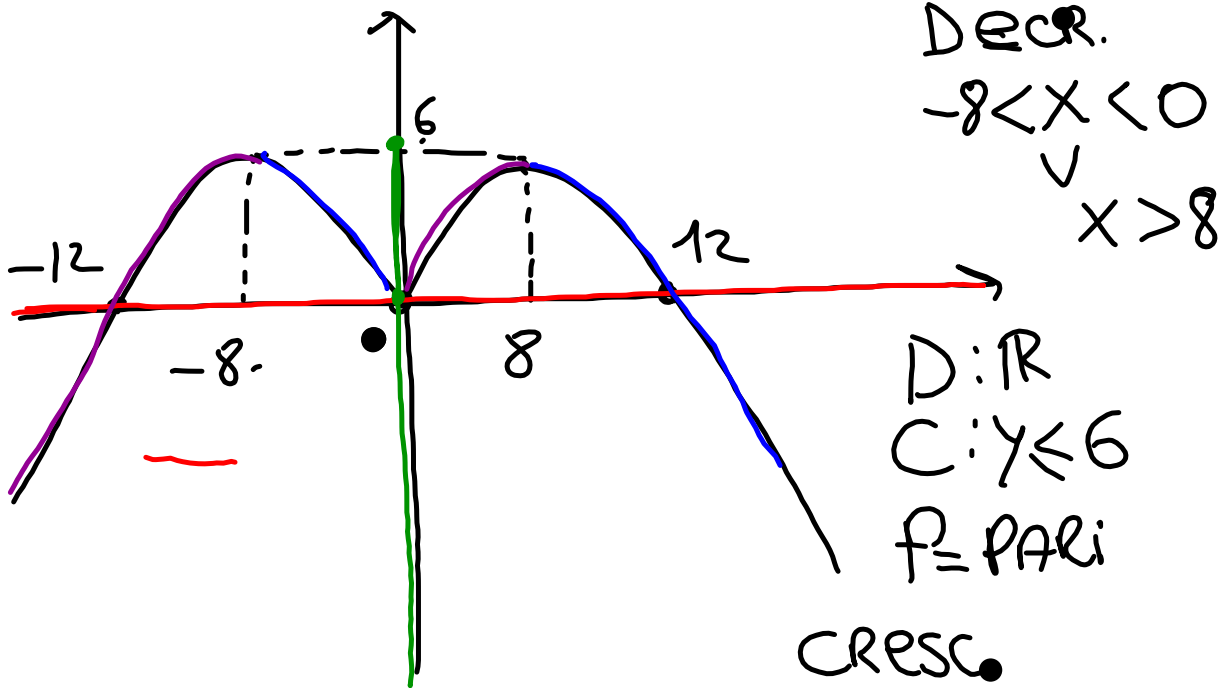
$y = f(x)$  DECRESCENTE in  $E$

$\forall x_1, x_2 \in E$

se  $x_1 < x_2 \implies f(x_1) > f(x_2)$



# INTERVALLI DI MONOTONIA



— . —

